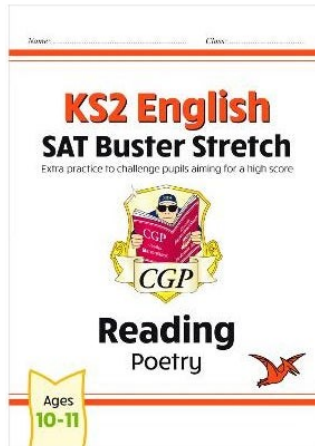


## Reading - Poetry

Read the poem called 'A Night with a Wolf' and answer the questions on pages 22, 23 and 24.



## Spelling

Please complete pages 11, 12, 13, 14 and 15 based on prefixes.



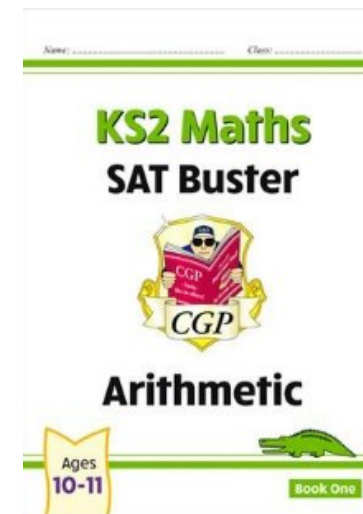
## Grammar

Please complete pages 24, 25, 26 and 27 on Clauses including Relative Clauses.



## Arithmetic

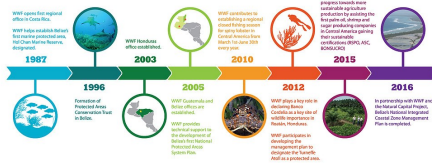
Please complete pages 145 and 46 on Percenrages.



## Pick a challenge to complete this week.

### History

How and when did conservation begin? Create a timeline of the history of conservation. Include major events, influencers, special days, celebrations etc.



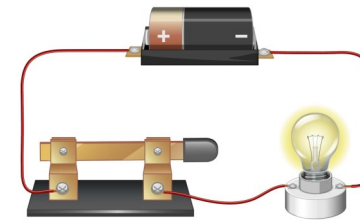
### Geography

Choose an animal that is on the endangered species list. Create a fact file, poster, powerpoint or something of your choice and write about that animal and what people can do to help conserve them.



### Science

Create a poster to show ways in which electricity is used in your house. Make it colourful and presented neatly



### Art

Create your own piece of 3D art using recycled materials that you have at home. Be as creative as you like.



### RE

Research Jewish festivals and celebrations. Plan a party for one of the celebrations. Where will it be? What food will be eaten? What activities will be happening? What decorations will be used? Remember it needs to follow Jewish rules.



### PE

Make a paper javelin. Think about how you can make the Javelin fly far. How can you make it aerodynamic? Will it fly further if it's heavy or light? Throw your javelin and measure how far it goes. Can you change your technique and make it go further?



Year 6's  
Home Learning

Homework due back on  
Wednesday 22nd April 2026